

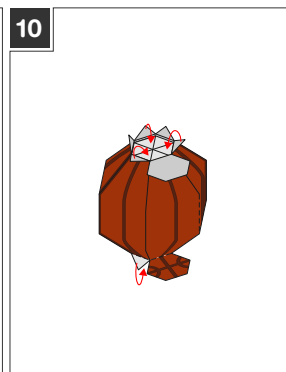
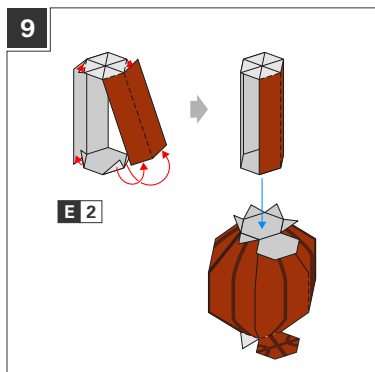
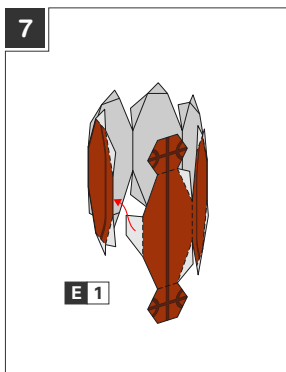
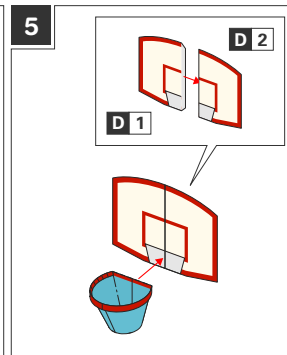
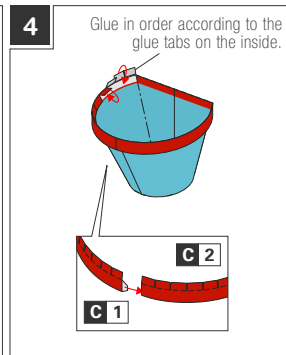
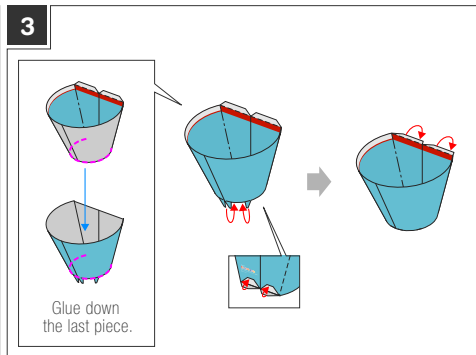
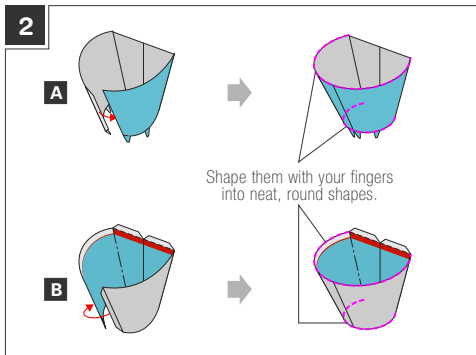
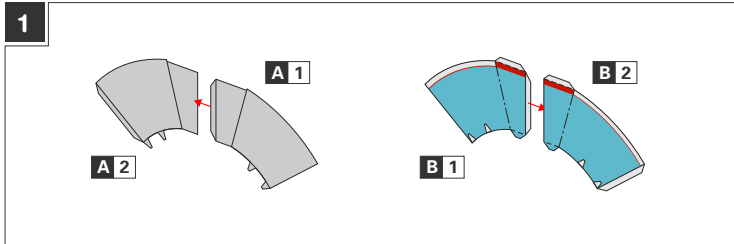


**Instructions**    **Pattern:** 7 sheets    **Number of Parts:** 10

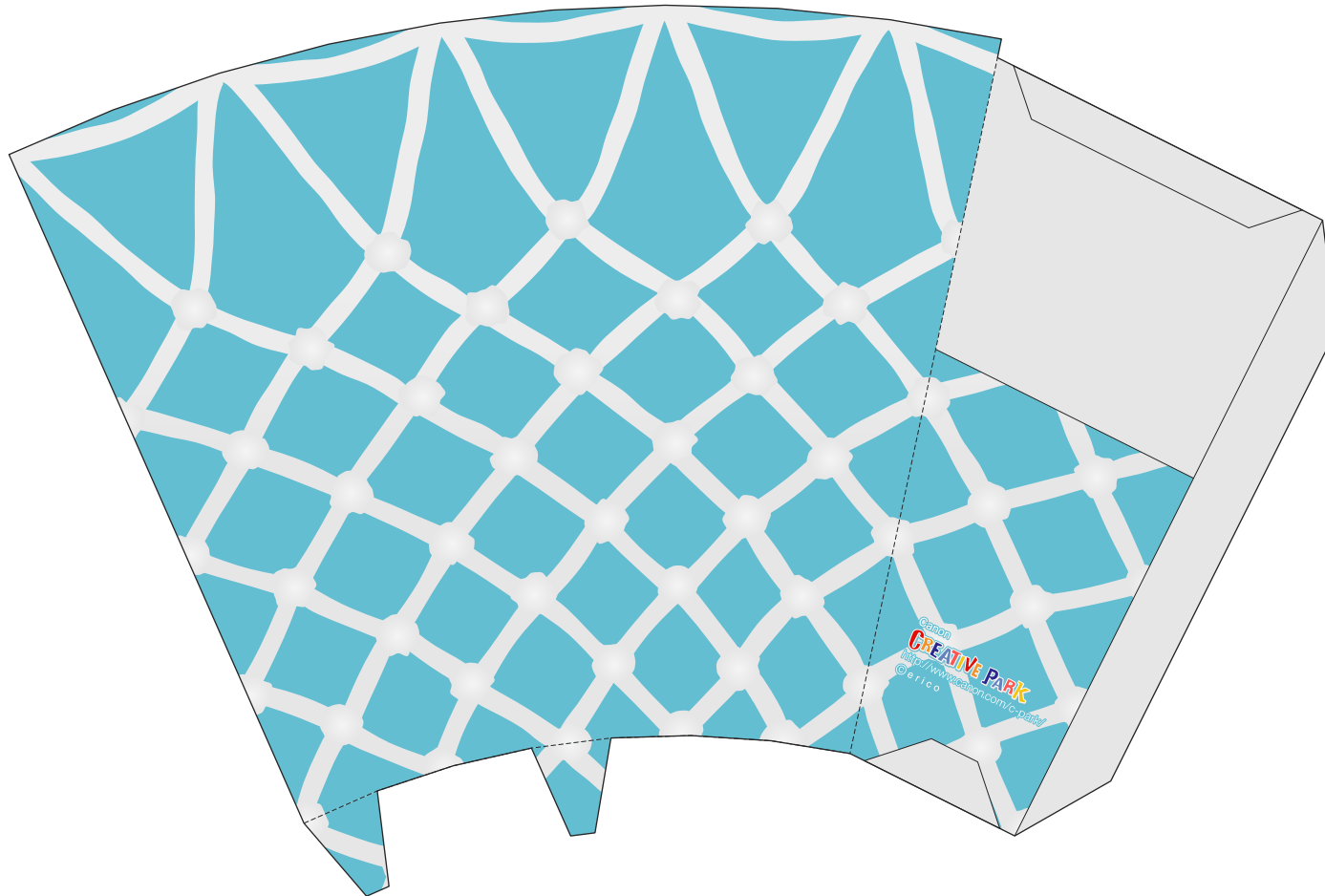
**You will need:** Scissors, glue, a ruler, a used ball-point pen  
**Assembly tip:** Trace along the folds with a ruler and a used pen(no-ink) to get a sharper, easier fold.

----- Mountain fold    - - - - - Valley fold    □ Glue spot  
 \_\_\_\_\_ Scissors line    ———— Cut in line

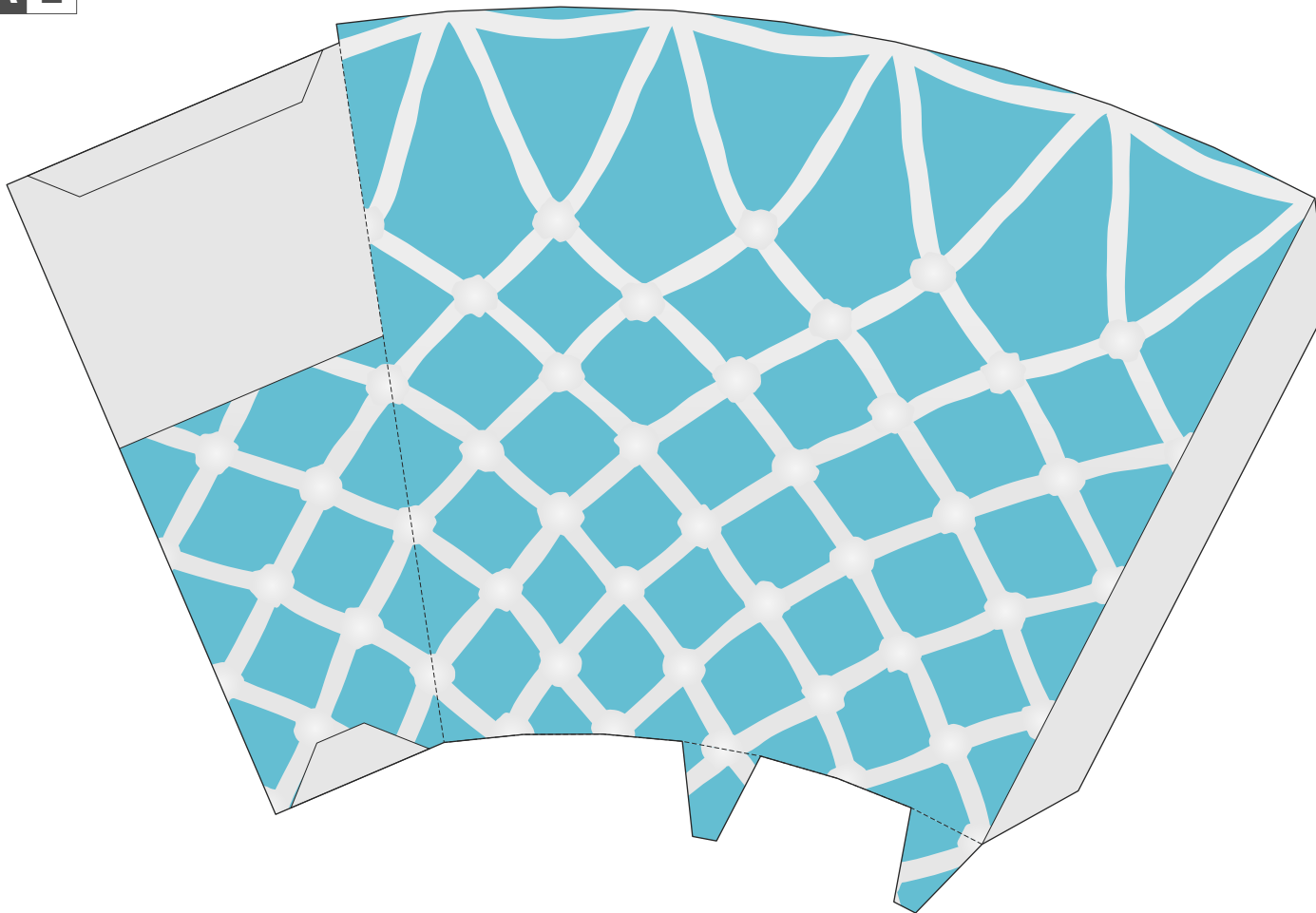
**Caution:** Glue, scissors and other tools may be dangerous to young children so be sure to keep them out of the reach of young children.



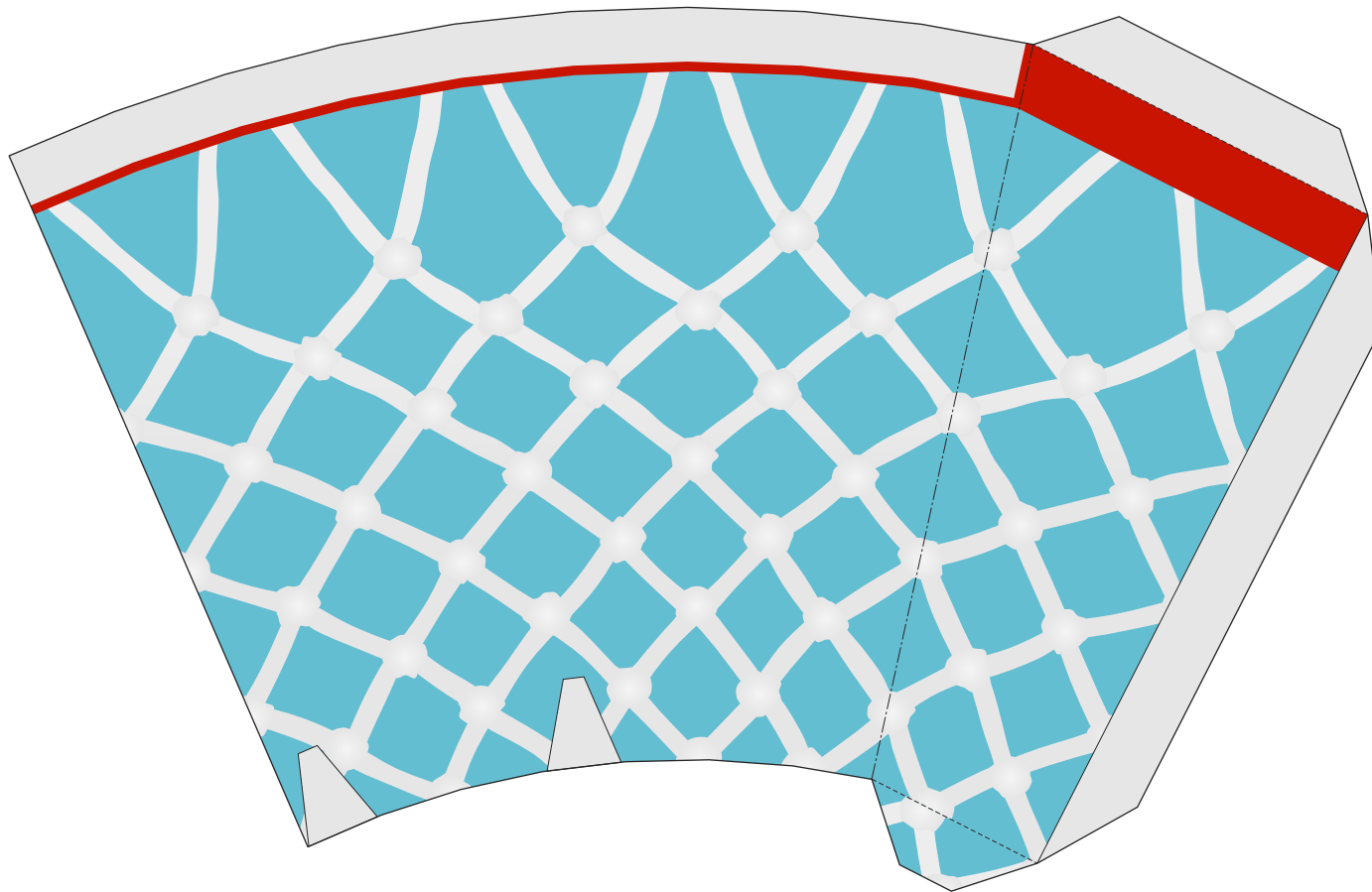
**A 1**



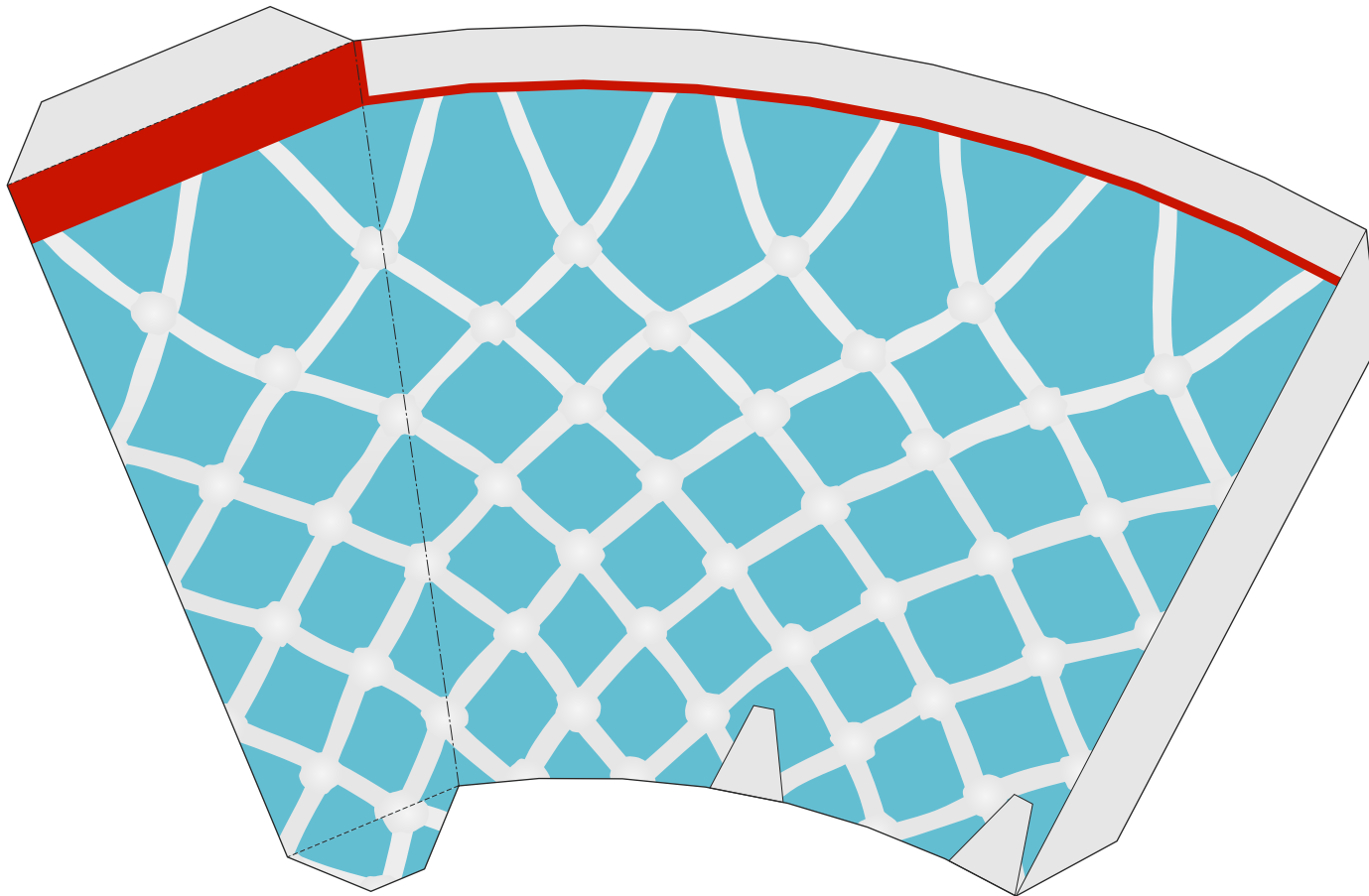
**A 2**



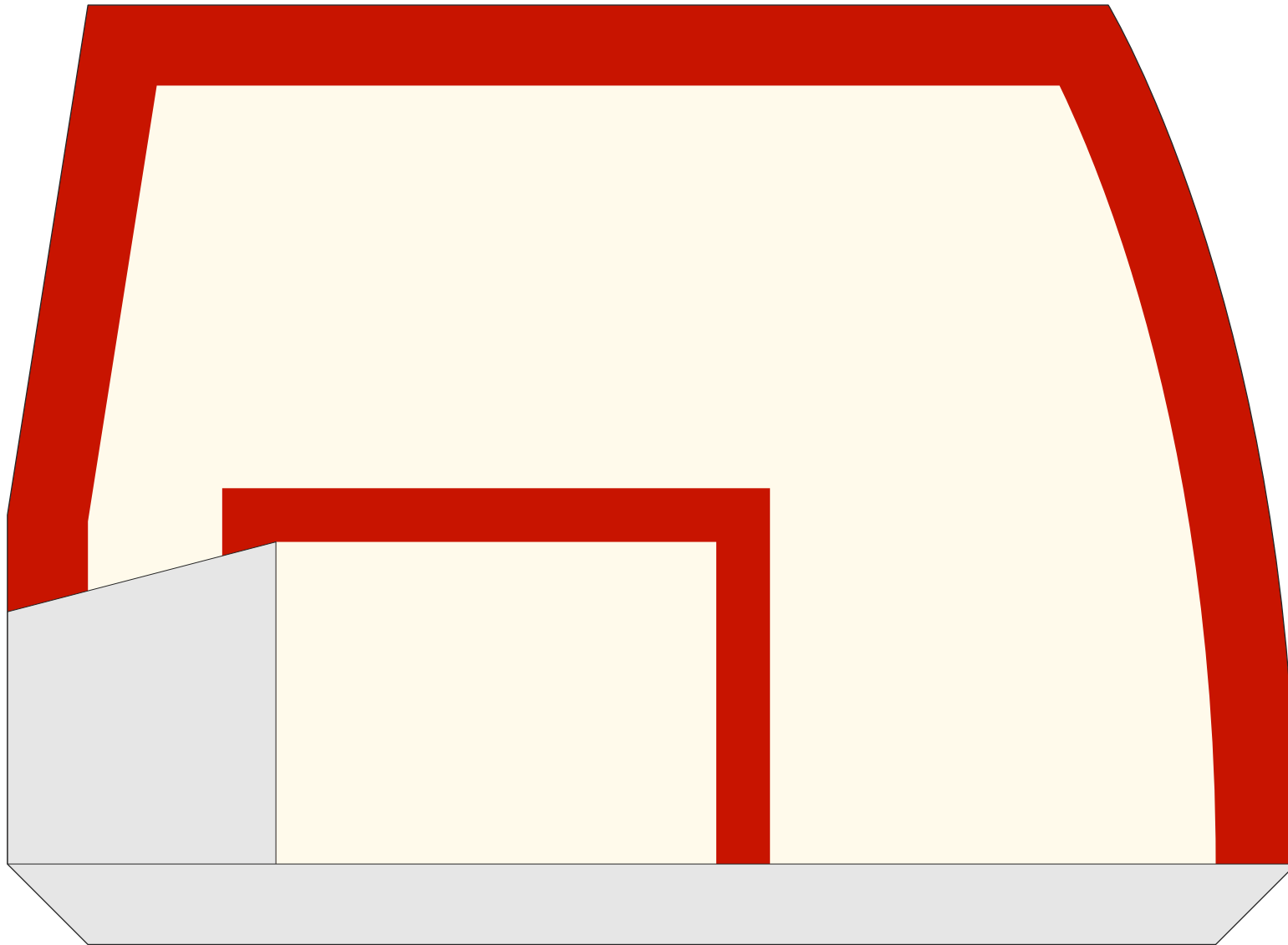
**B 1**



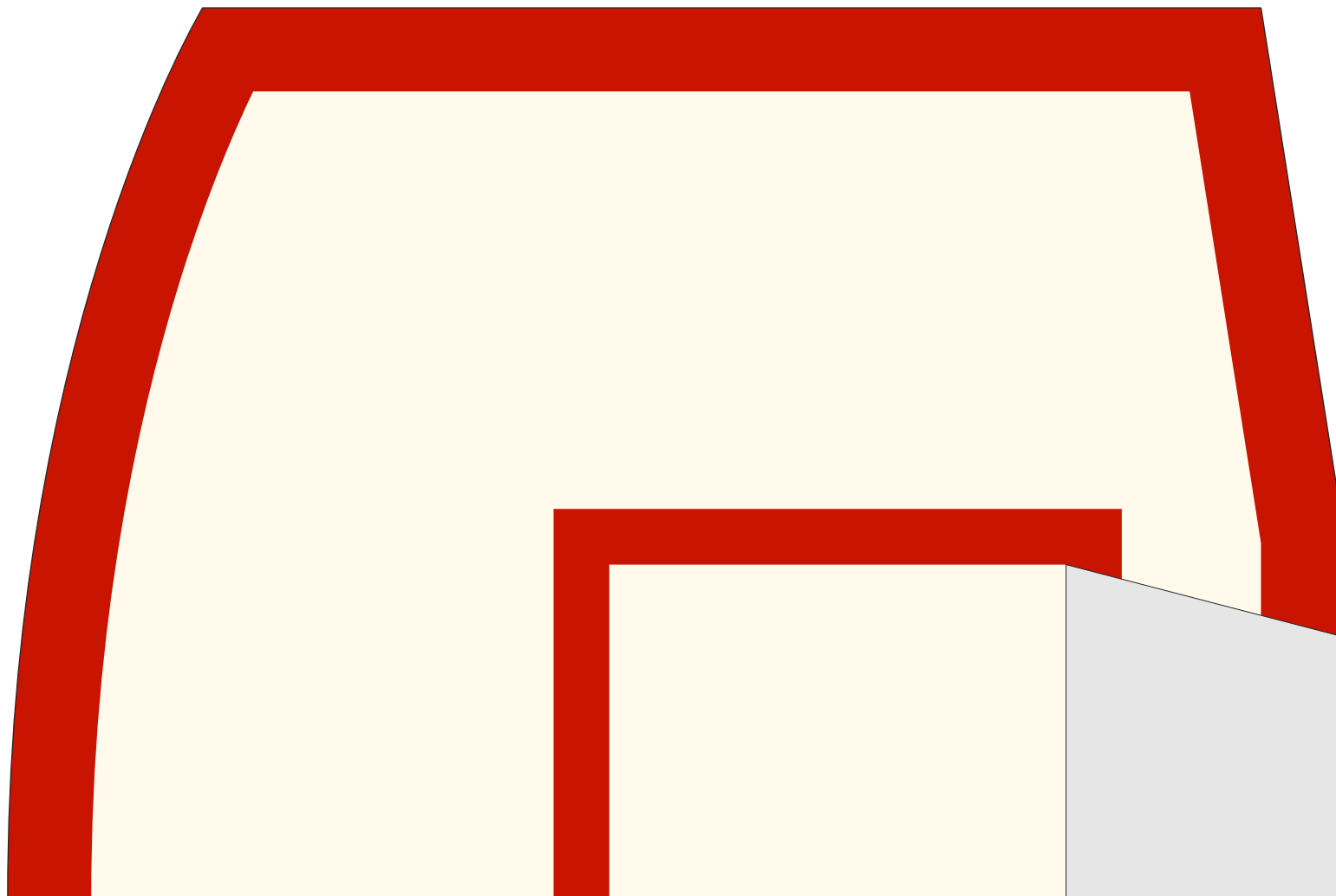
**B 2**



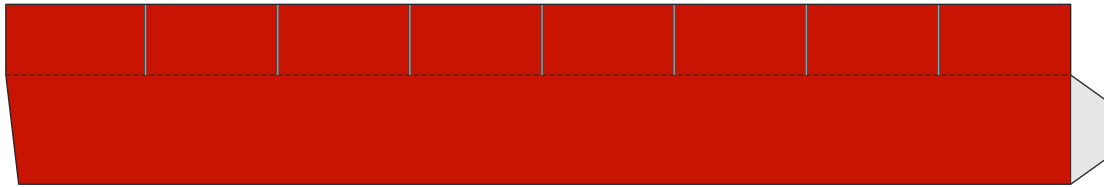
**D 1**



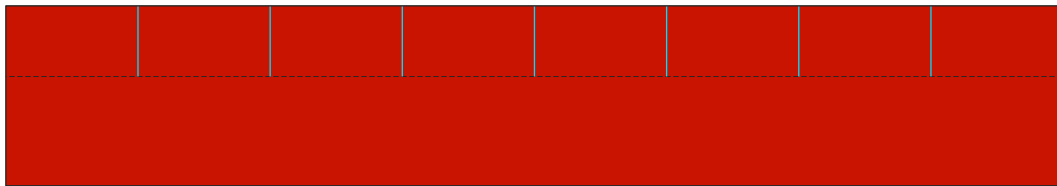
**D 2**



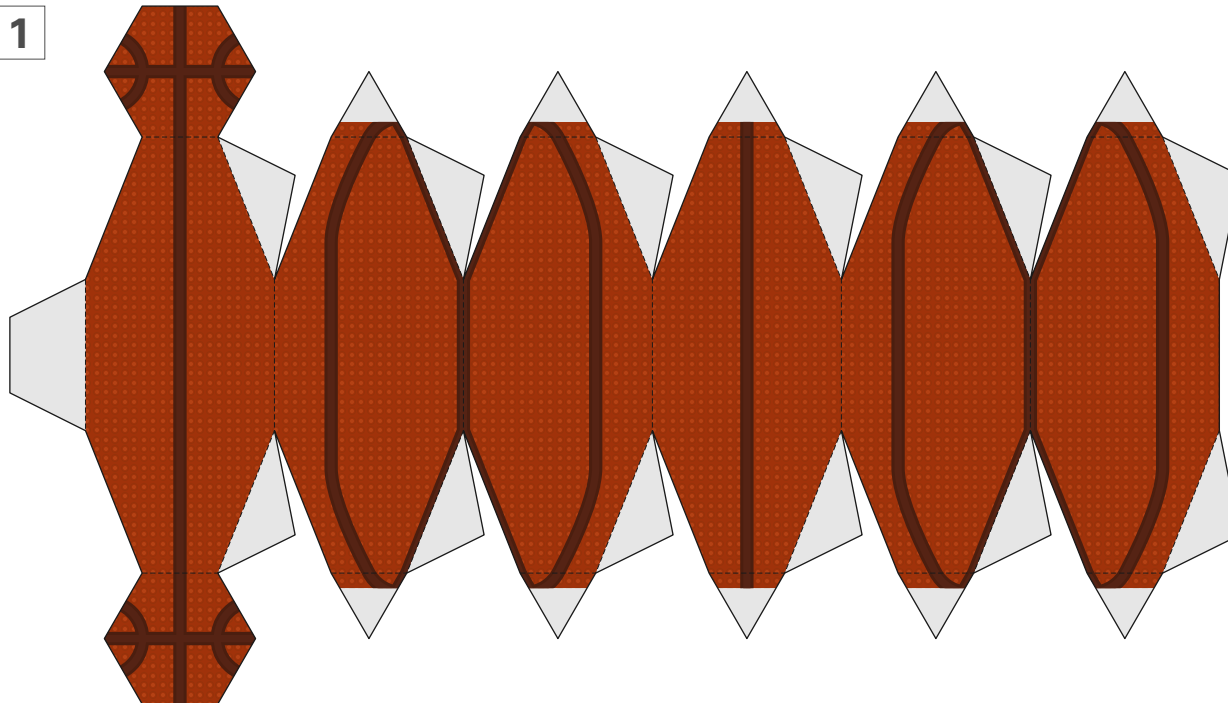
**C 1**



**C 2**



**E 1**



**E 2**

