

# 3-D Insectosaurus

## ASSEMBLY INSTRUCTIONS

Time to Complete: Approximately 25 minutes    Level: Easy



### GETTING STARTED

#### Materials:

- Metal-edged ruler
- Butter knife
- Scissors or X-ACTO knife
- Cutting mat (optional)
- Multipurpose glue

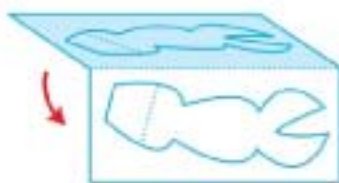
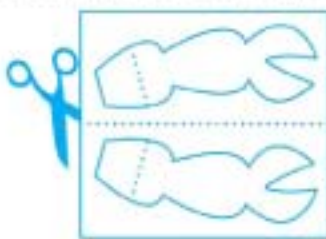
- 1** Score all the pieces, using a ruler as a guide and running the back side of a butter knife firmly along all the dotted lines.



- 2** Using scissors or an X-ACTO knife and cutting mat, cut out all pieces (except arms) along the solid lines, being sure to make a small cut where marked on body.

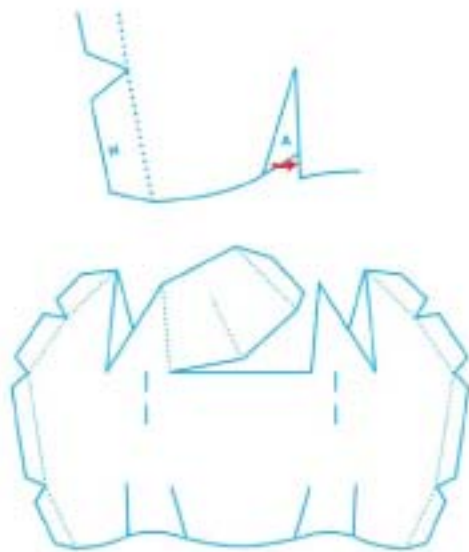


- 3** Cut out black box around each arm. Fold arms in half and glue together. Cut out each arm along solid lines.

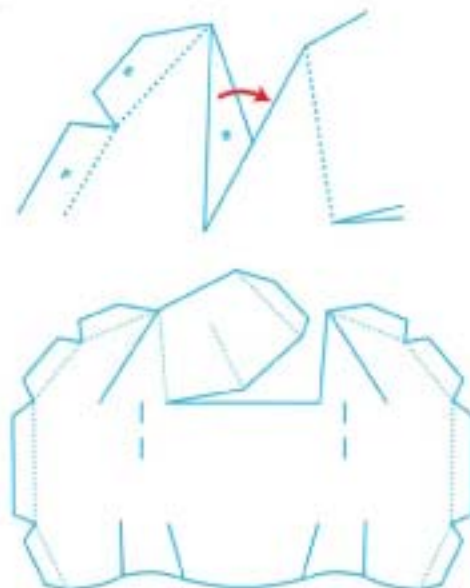


### ASSEMBLE YOUR INSECTOSAURUS

- 4** On the bottom of body piece, pull edge of cut line on one tab A over to cover white triangle and glue. Repeat with remaining A tabs.

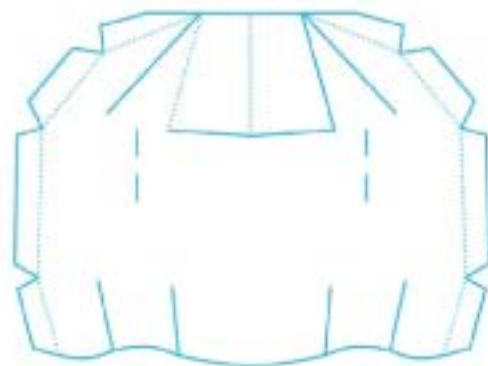
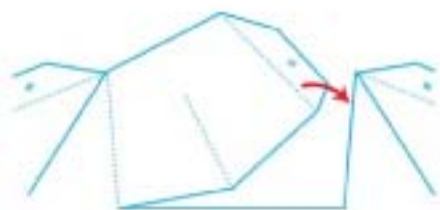


- 5** On the top of body piece, pull edge of cut line on one tab B over to cover white triangle and glue. Repeat with remaining B tabs.

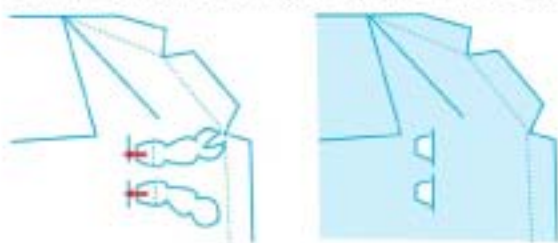


## ASSEMBLE YOUR INSECTOSAURUS (continued)

- 6 Glue tab C in place.



- 7 Stick upper and lower arms into slits in body. Fold over on dotted lines and glue in place inside body.



- 8 On back piece, glue tab D to underside of top of body.



- 9 Begin to glue remaining tabs on back piece to sides of body piece, starting with first two tabs on each side (tabs E & F).

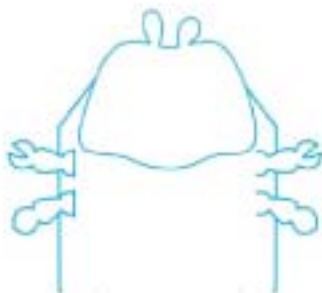


Finish with tabs G and H on both sides. Allow to dry completely.

- 10 Gently fold end of tail upward.



- 11 Glue face piece onto top of body (mold to fit), and allow to dry completely.

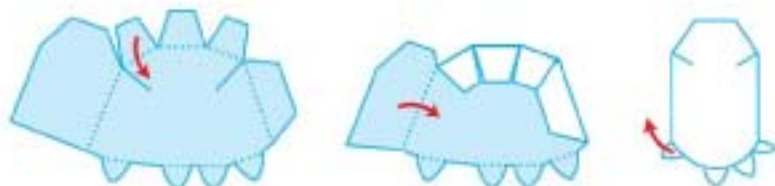


- 12 To make one leg, pull edge of cut line on tabs I and J over to cover white triangles and glue.

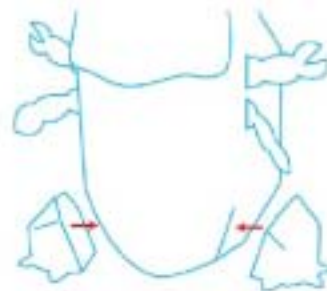


## ASSEMBLE YOUR INSECTOSAURUS (continued)

- 13 Fold all remaining tabs inward and glue to back of leg. Fold claws upward. Repeat with other leg.



- 14 Attach legs to body by aligning white lines on back of legs to bottom of body and glue.



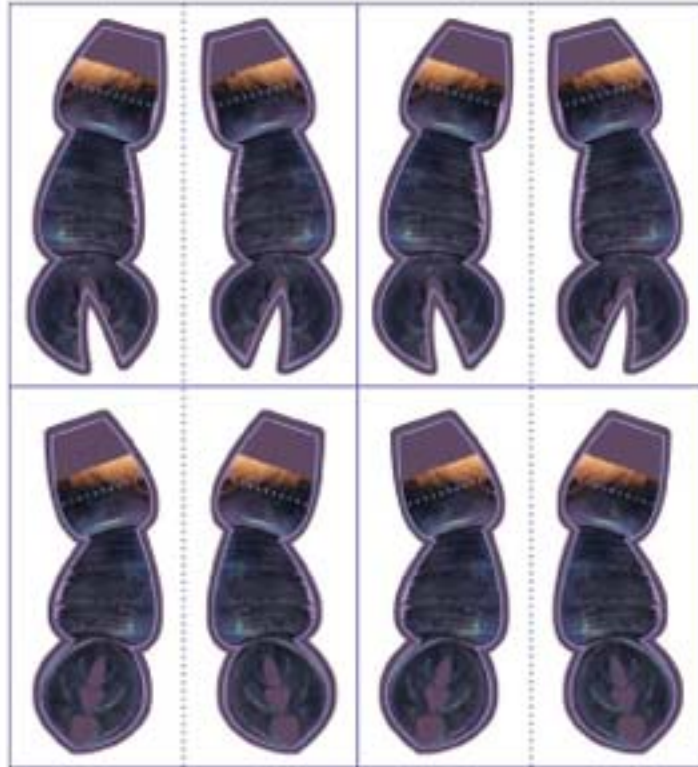
- 15 You're done!



MONSTERS VS ALIENS 3-D INSECTOSAURUS

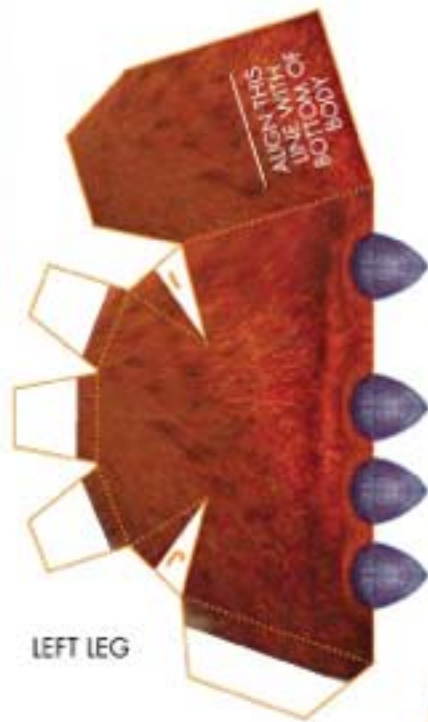


BACK PIECE



UPPER ARMS

LOWER ARMS



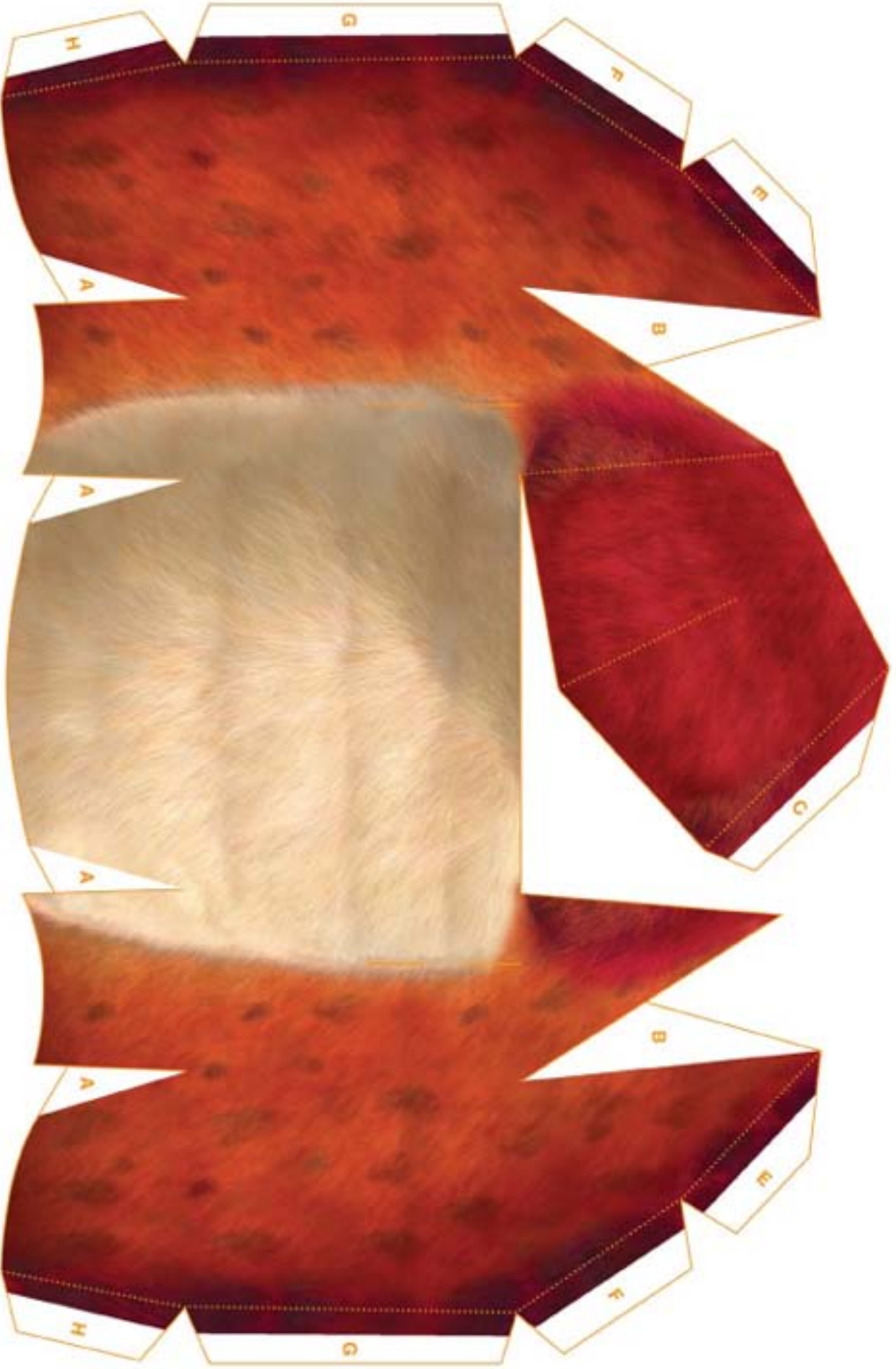
LEFT LEG



FACE PIECE



RIGHT LEG



BODY PIECE